

SEPT6 Antibody (C-term)
Affinity Purified Rabbit Polyclonal Antibody (Pab)
Catalog # AP18676b**Specification**

SEPT6 Antibody (C-term) - Product Information

Application	WB,E
Primary Accession	Q14141
Other Accession	Q9R1T4 , Q3SZN0 , NP_055944.2
Reactivity	Human, Mouse
Predicted	Bovine
Host	Rabbit
Clonality	Polyclonal
Isotype	Rabbit IgG
Calculated MW	49717
Antigen Region	400-426

SEPT6 Antibody (C-term) - Additional Information**Gene ID** 23157**Other Names**

Septin-6, SEPT6, KIAA0128, SEP2

Target/Specificity

This SEPT6 antibody is generated from rabbits immunized with a KLH conjugated synthetic peptide between 400-426 amino acids from the C-terminal region of human SEPT6.

Dilution

WB~~1:1000

E~~Use at an assay dependent concentration.

Format

Purified polyclonal antibody supplied in PBS with 0.09% (W/V) sodium azide. This antibody is purified through a protein A column, followed by peptide affinity purification.

Storage

Maintain refrigerated at 2-8°C for up to 2 weeks. For long term storage store at -20°C in small aliquots to prevent freeze-thaw cycles.

Precautions

SEPT6 Antibody (C-term) is for research use only and not for use in diagnostic or therapeutic procedures.

SEPT6 Antibody (C-term) - Protein Information**Name** SEPTIN6 ([HGNC:15848](#))

Synonyms KIAA0128, SEP2, SEPT6

Function Filament-forming cytoskeletal GTPase. Required for normal organization of the actin cytoskeleton. Involved in cytokinesis. May play a role in HCV RNA replication. Forms a filamentous structure with SEPTIN12, SEPTIN6, SEPTIN2 and probably SEPTIN4 at the sperm annulus which is required for the structural integrity and motility of the sperm tail during postmeiotic differentiation (PubMed:[25588830](#)).

Cellular Location

Cytoplasm. Cytoplasm, cytoskeleton, spindle Chromosome, centromere, kinetochore Cleavage furrow. Midbody. Cell projection, cilium, flagellum. Note=In metaphase cells, localized within the microtubule spindle. At the metaphase plate, in close apposition to the kinetochores of the congressed chromosomes. In cells undergoing cytokinesis, localized to the midbody, the ingressing cleavage furrow, and the central spindle. Found in the sperm annulus (PubMed:25588830).

Tissue Location

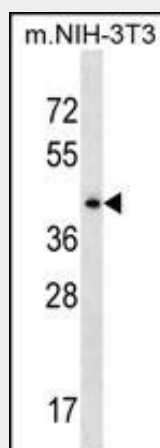
Widely expressed..

SEPT6 Antibody (C-term) - Protocols

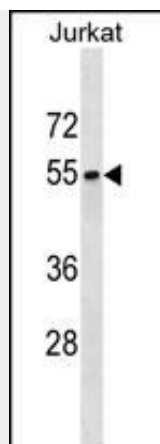
Provided below are standard protocols that you may find useful for product applications.

- [Western Blot](#)
- [Blocking Peptides](#)
- [Dot Blot](#)
- [Immunohistochemistry](#)
- [Immunofluorescence](#)
- [Immunoprecipitation](#)
- [Flow Cytometry](#)
- [Cell Culture](#)

SEPT6 Antibody (C-term) - Images



SEPT6 Antibody (C-term) (Cat. #AP18676b) western blot analysis in mouse NIH-3T3 cell line lysates (35ug/lane). This demonstrates the SEPT6 antibody detected the SEPT6 protein (arrow).



SEPT6 Antibody (C-term) (Cat. #AP18676b) western blot analysis in Jurkat cell line lysates (35ug/lane). This demonstrates the SEPT6 antibody detected the SEPT6 protein (arrow).

SEPT6 Antibody (C-term) - Background

This gene is a member of the septin family of GTPases. Members of this family are required for cytokinesis. One version of pediatric acute myeloid leukemia is the result of a reciprocal translocation between chromosomes 11 and X, with the breakpoint associated with the genes encoding the mixed-lineage leukemia and septin 2 proteins. This gene encodes four transcript variants encoding three distinct isoforms. An additional transcript variant has been identified, but its biological validity has not been determined.

SEPT6 Antibody (C-term) - References

Ding, X., et al. J. Biochem. Mol. Biol. 40(6):973-978(2007)
Sirajuddin, M., et al. Nature 449(7160):311-315(2007)
Kremer, B.E., et al. Cell 130(5):837-850(2007)
Matsuoka, S., et al. Science 316(5828):1160-1166(2007)
Kim, C.S., et al. J. Virol. 81(8):3852-3865(2007)